



MONTHLY MEMBERSHIP PROGRESS REPORT

District 31 L

Results as of: 3/31/2017

GMT: HARVEY WHITLEY

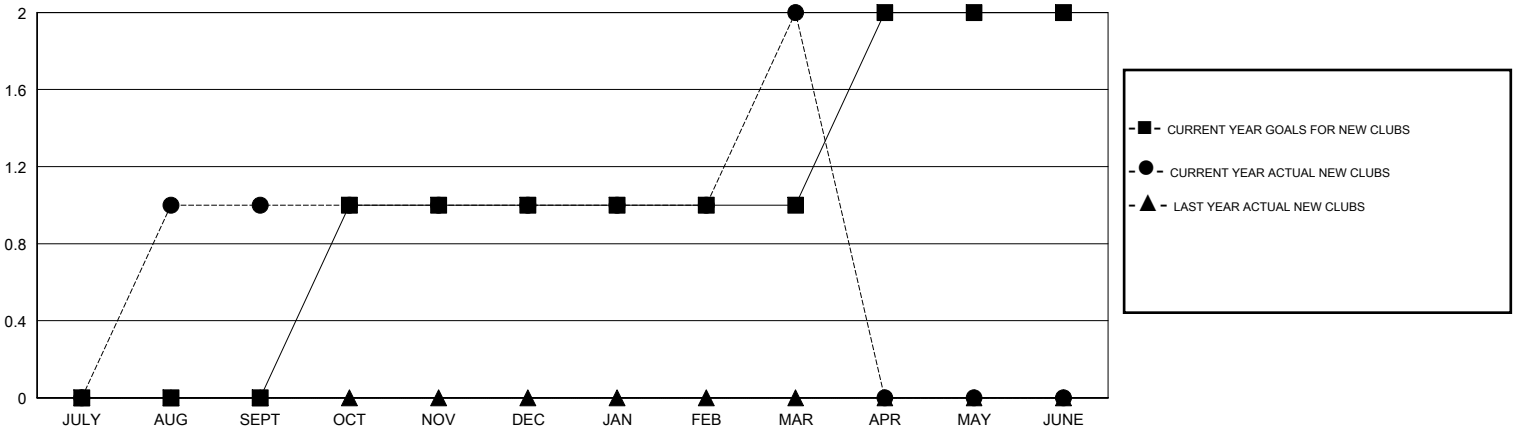
LOCATION NORTH CAROLINA

GMT CA

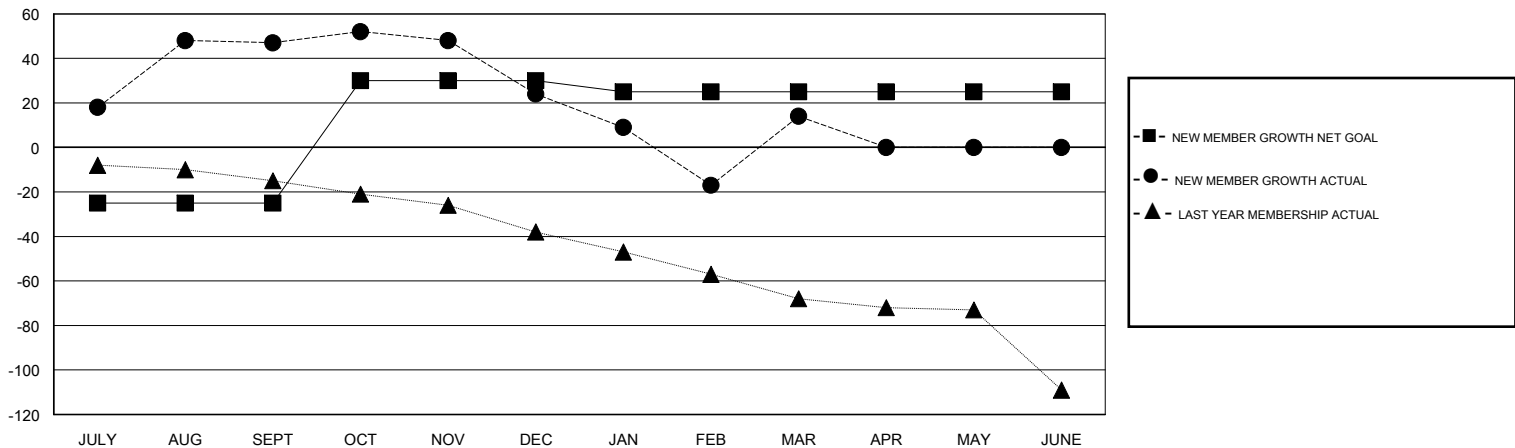
Clubs			
RESULTS FOR 2016-2017			
QUARTER	NEW CLUB GOAL	NEW CLUBS	DROPPED CLUBS
JULY/AUG/SEPT	0	1	0
OCT/NOV/DEC	1	0	0
JAN/FEB/MAR	0	1	0
APR/MAY/JUNE	1	0	0

Members			
RESULTS FOR 2016-2017			
QUARTER	NEW MEMBER GROWTH NET GOAL (not reinstated or transfers)	NEW MEMBER GROWTH ACTUAL (not reinstated or transfers)	DROPPED MEMBERS ACTUAL (including transfers)
JULY/AUG/SEPT	-25	89	42
OCT/NOV/DEC	55	18	41
JAN/FEB/MAR	-5	45	55
APR/MAY/JUNE	0	0	0

GOALS AND ACTUAL NEW CLUBS CUMULATIVE



GOALS AND ACTUAL MEMBERS CUMULATIVE



DROPPED CLUBS: 0	31 CLUBS OF 68 ADDED 1 OR MORE NEW MEMBERS	<u>GENDER DISTRIBUTION</u>	
DROPPED MEMBERS		MALE	813 (63.86%)
DECEASED	21	FEMALE	460 (36.14%)
CLUB CANCELLED	0	TOTAL FAMILY UNIT MEMBERS	303
OTHER	117	FAMILY MEMBERS PAYING HALF DUES	154
TOTAL	138		

[CLICK HERE FOR CUMULATIVE MEMBERSHIP DATA](#)